

Galore Creek  
Gold-Silver-Copper System

NovaGold  
Resources Inc.

&

SpectrumGold Inc.

April 2004



# **NovaGold Resources: *A Brief Introduction***

TSX/AMEX Listed; No debt; C\$60M in cash  
> 17Moz in gold resources since 1998  
5 advanced projects in Alaska and BC  
First operation in 2006; targeting over  
500,000 oz/year production by 2010  
JV partners: Placer Dome, Rio Tinto  
4 Alaskan Native Corporation Agreements  
SpectrumGold transaction - June 04



# Galore Creek Resource

By 1992, Kennecott defined a 314 Mt open pittable gold-silver-copper resource at Central and Southwest Zones Containing:

5 Million Ounces Gold Grading 0.5 g/t

60 Million Ounces Silver Grading 6 g/t

5 Billion Pounds Copper Grading 0.7%

SpectrumGold believes that a core zone of 80 to 150 Mt exists within this resource averaging 1 g/t gold and 1% copper – ***grades which are among the highest in the world for gold-copper systems.***

Fall 2003 drilling by Spectrum supported this view with the 8 holes completed having an average high grade interval of 131m averaging 1.15 g.t gold & 1.2% copper

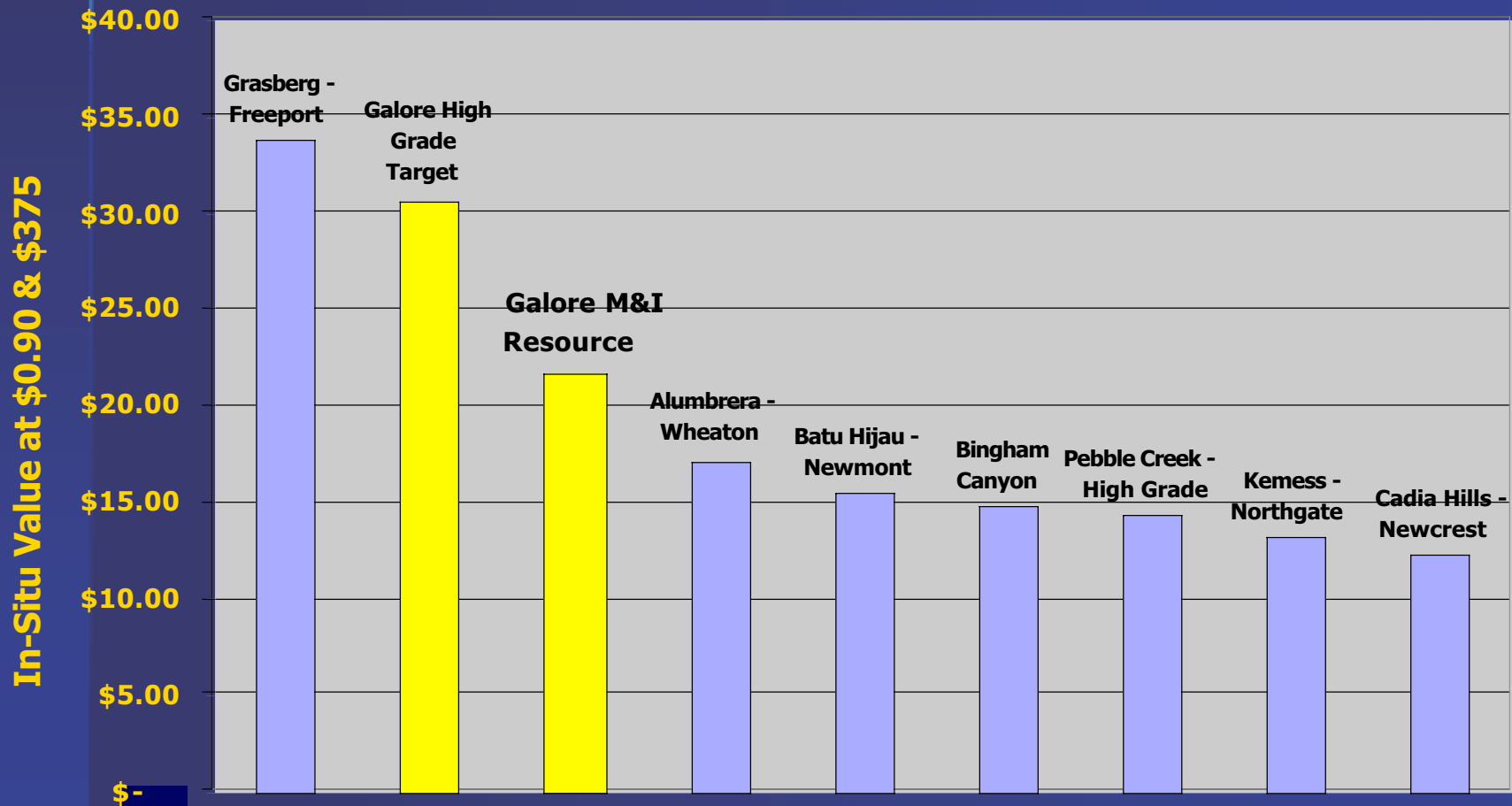
Numerous exploration targets remain under explored.

# Galore Creek Aerial View Looking North



# Galore Creek

## Major Gold-Copper Occurrences In-Situ Reserve/Resource Value per Tonne



# Galore Creek Development Concepts

Mining method: open pit and possibly U/G at 30-60,000 tpd rate – 2:1 waste:ore strip ratio

Processing: conventional copper flotation

Product: Copper concentrate w/precious metals – shipped through Stewart deepsea port

Infrastructure: Access road options to Stewart-Cassiar Highway #37 (80-150 km) with tunnels, link to hydropower grid (Forrest-Kerr), construction access via Stikine by barge.

Initial Capital Cost: C\$400-650M

Project life: >25 years based on current resource

Employment: 250-400 (direct) + contractors.

# **Galore Creek Activities: Sept 03 - present**

Drill program & Review of historic data  
Resource update and scoping studies  
underway – Hatch Engineering  
Tahltan First Nation meetings  
Discussions with BC Government  
regarding EA/permitting process  
Baseline environmental studies  
Preparation for 2004 field season

# The Tahltan First Nation – our evolving partnership

NovaGold has been actively engaged in a dialogue with the Tahltan since the fall of 2003.

We have agreed with the Tahltan to work closely in project definition, to share information and plans, and to:

- Support existing TNDC enterprises where possible
- Encourage our key service providers to establish JV businesses and training programs with the Tahltan
- Jointly hire a Senior Tahltan Project Coordinator
- Financially support training programs and community consultation

A formal Participation Agreement is now being drafted.

# Galore Creek Scoping Study: Hatch Engineering

Mining method – pit vs. underground

Metallurgy – precious metal recovery

Site layout – tailings, waste rock

Power & Access alternatives

Capital & operating costs

Environmental characteristics

Economics and sensitivities

# Infrastructure Options



# 2004 Field Activities

Drill program: >20,000 metres

in-fill for pre-feasibility

depth/strike exploration

priority regional targets

Copper Canyon exploration

Metallurgical/geotechnical studies

Access corridor studies

Environmental baseline monitoring

2004 budget: >C\$5 million

# Galore Creek Camp



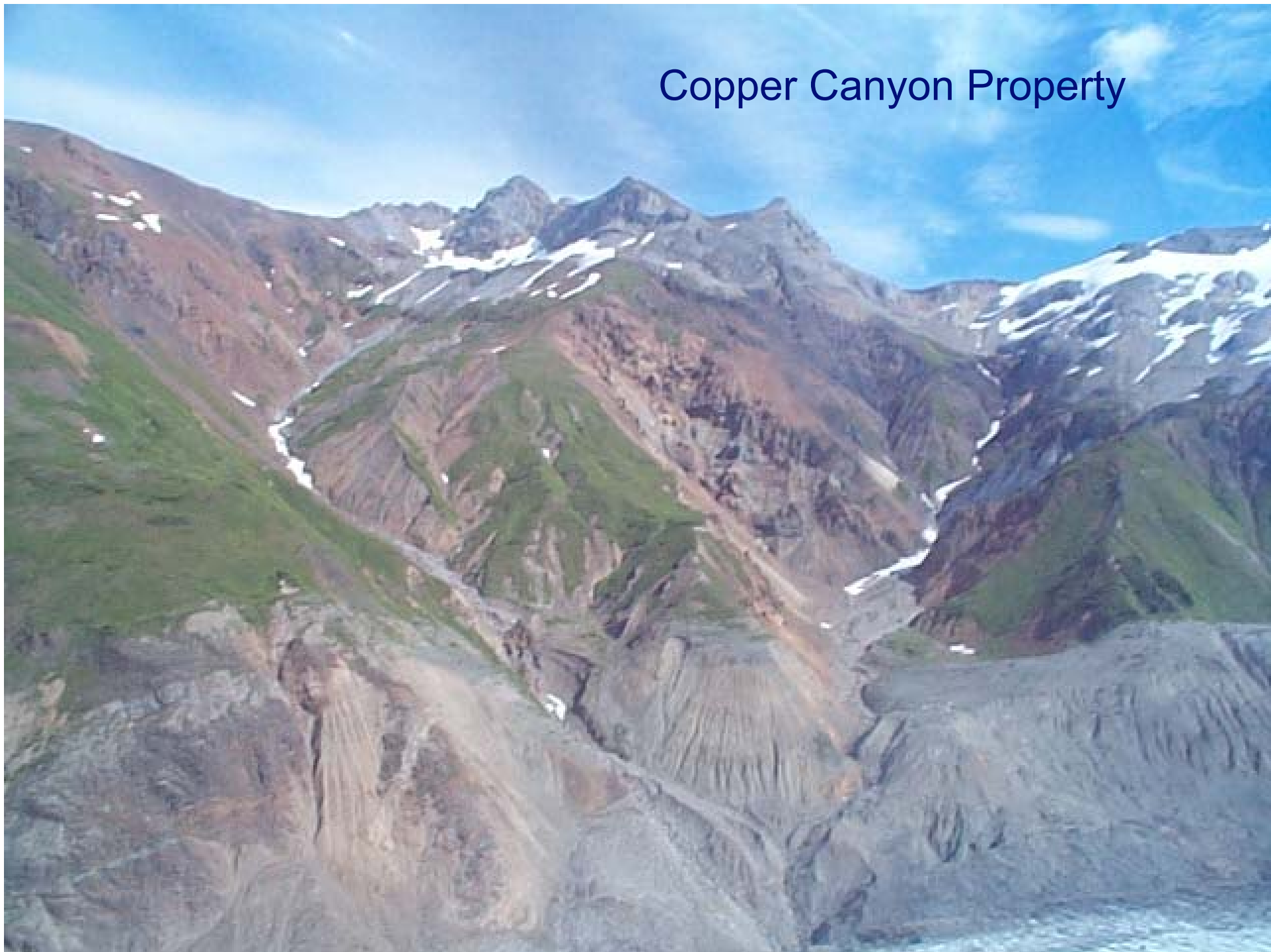
Galore Creek – Looking East  
Toward Copper Canyon



**Disseminated and Semi-massive Replacement Style  
Copper Mineralization (cpy and brn) Typical of  
Central Replacement Zone**



## Copper Canyon Property



# Galore Creek Target Timetable

2004:

- Update resource & scoping study (Q2); *exploration ongoing*
- EA terms of reference (Q3) & baseline studies underway
- Conclude Tahltan Participation Agreement

2005:

- Complete pre-feasibility study (Q2); *exploration ongoing*
- Preparation and submission of EA documents

2006

- Feasibility Complete (Q1/Q2)
- Environmental approval certificate issued (Q4)

2007

- Major permits issued (Q1)
- Construction to commence (Q2)

2009 – Operations commence

# The Galore Creek Project Team

## NovaGold/SpectrumGold:

**Doug Brown** – Overall co-ordination, community/government relations, environmental and engineering studies management

**Jim Muntzert** – Leadership, planning and direction of geologic programs, studies and field activities

**Scott Petsel** – Senior Geologist

**Sue Craig** – Land use, permitting and environmental review

## Advisors and Consultants:

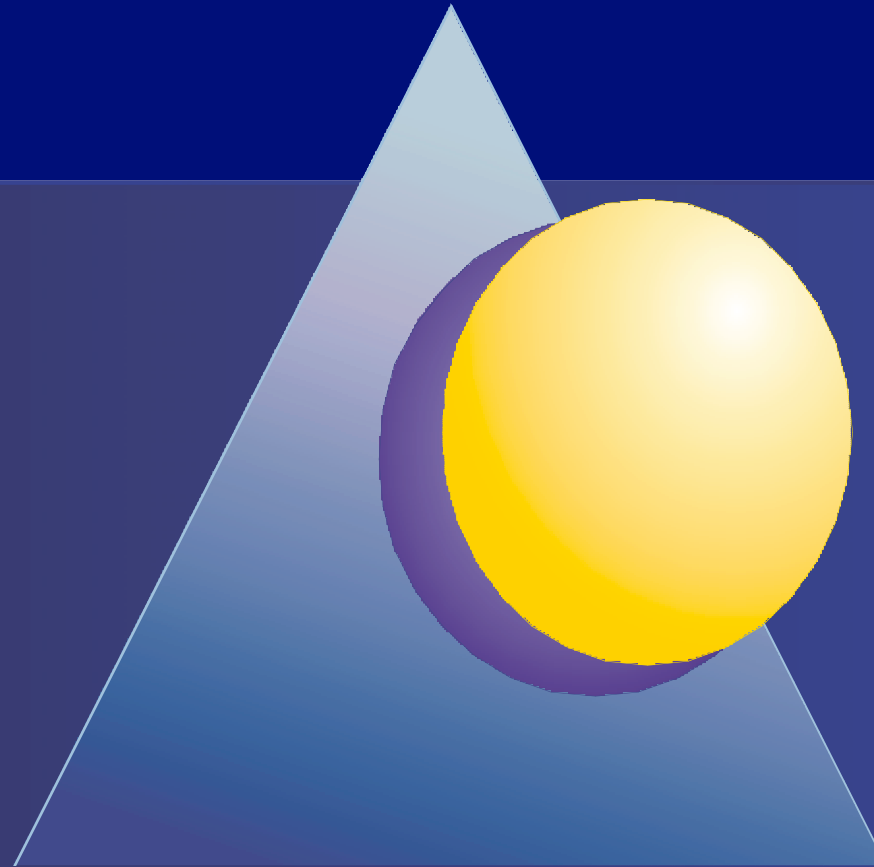
**Rescan Environmental Services** – Environmental

**Hatch Engineering** – Scoping study direction

**BGC Engineering** – Geotechnical and tailings

**Blake, Cassels & Graydon** – Legal

**Michael Farnsworth** – Government Relations



**NovaGold Resources Inc.**

*Creating Wealth Through Discovery*