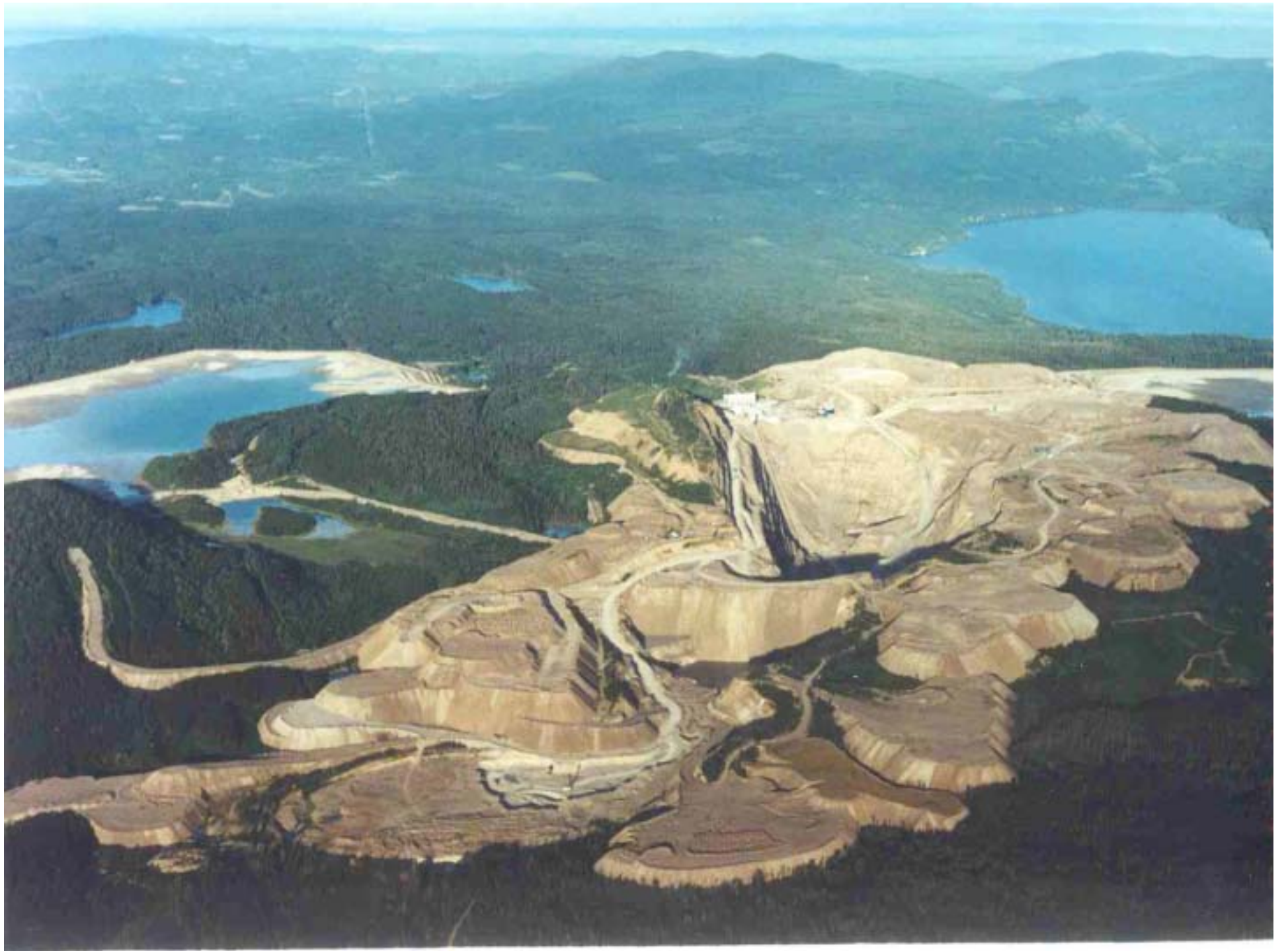




# Endako Mines

A Joint Venture of  
Thompson Creek Mining Ltd and  
Sojitz Noble Alloys Corp. (Formerly Nissho Iwai)



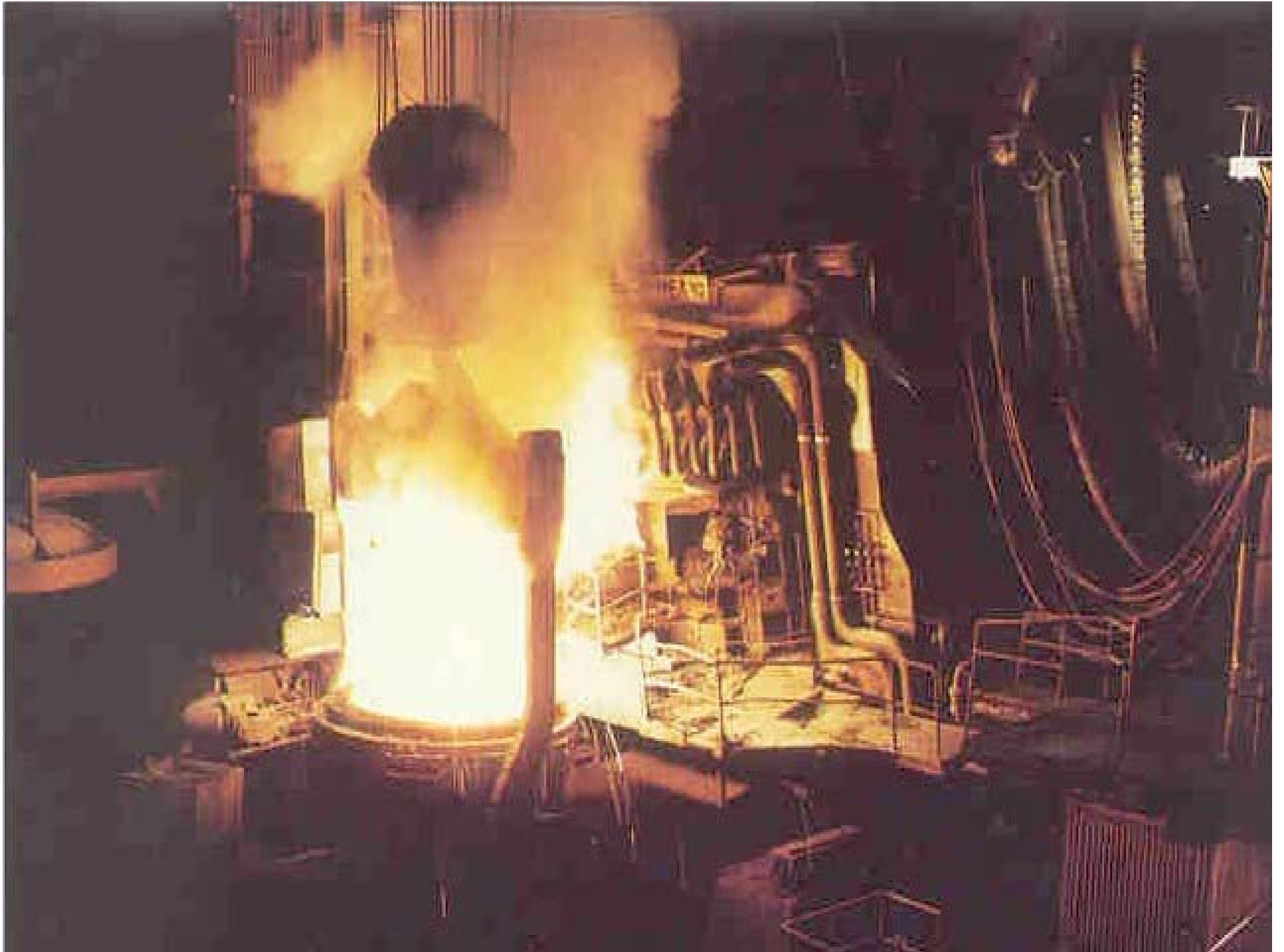
# History of Endako

- 1927 Deposit Discovered by Two Local Hunters
- 1934 Small Incline Shaft Sunk for Exploration
- 1934-1959 Various Companies Looked at Deposit but Claims Allowed to Lapse.
- 1962 Deposit Re-staked and Drilled
- 1965 Following Two Years of Construction and Development of Fraser Lake, Mine Began Production at 9,070tonnes/day
- 1965-1981, Mill Expanded in Stages to 27,200tonnes/day
- 1982 Shutdown Because of High Inventory Levels
- 1986 Mine Restarted
- 1997 Endako Sold by Placer Dome to Present Joint Venture
- 1998 Product Prices Collapsed
- 2003 Prices Began to Recover

# Production

Mill Feed	27,200 t/day
Waste	20,000 t/day
Average Grade	0.123% MoS <sub>2</sub>
Recovery	78%
Molybdcic Oxide Production	About 10,000,000 lb/yr

# Uses of Molybdenum

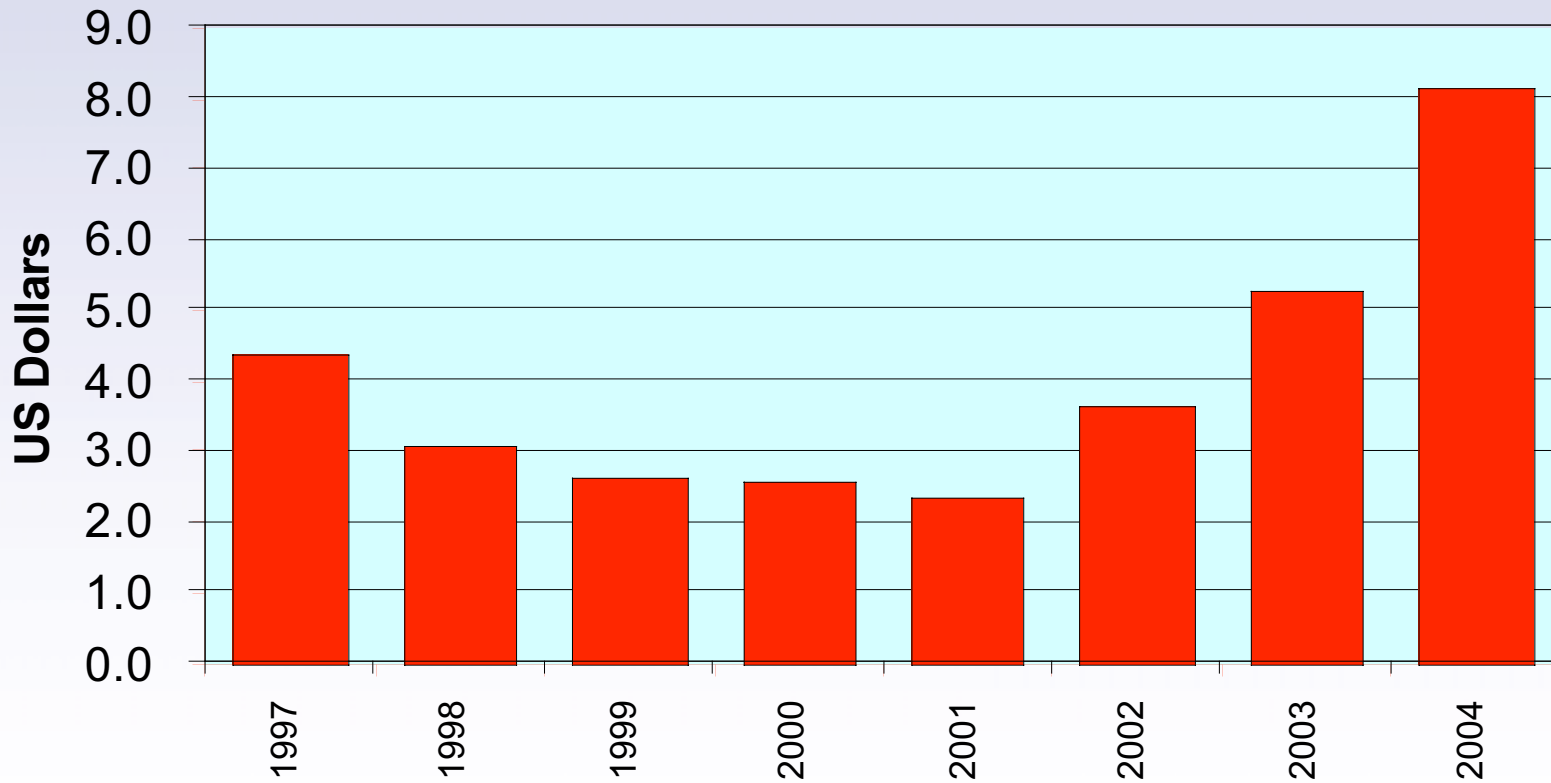








# Price of Molybdenum Oxide 1997 to 2004



# Cost Saving Measures for Surviving the Lean Years

- Mined Surface Stockpiles
- Mined Reserves Near Surface Crusher
- Reduced Waste Mining
- Reduced Manpower
- Delayed Capital Expenditures
- Parked Mine Equipment
- Installed Inpit Crushing System
- Job Protection Agreement

### P3 CONVEYOR

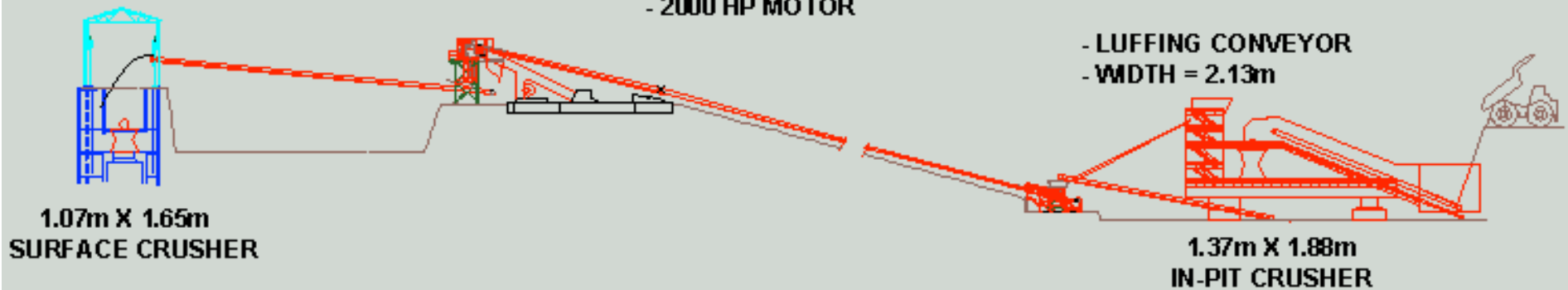
- LIFT = 5m
- LENGTH = 50m
- ANGLE = 5.74°
- WIDTH = 1.37m
- SPEED = 4.3 mps
- 100 HP MOTOR

### P2 CONVEYOR

- STEEL CORD
- LIFT = 190m
- LENGTH = 726m
- ANGLE = 15.11°
- WIDTH = 1.37m
- SPEED = 4.1 mps
- 2000 HP MOTOR

### P1 CONVEYOR

- LUFFING CONVEYOR
- WIDTH = 2.13m



SECTION FROM THE SURFACE TO IN-PIT CRUSHER

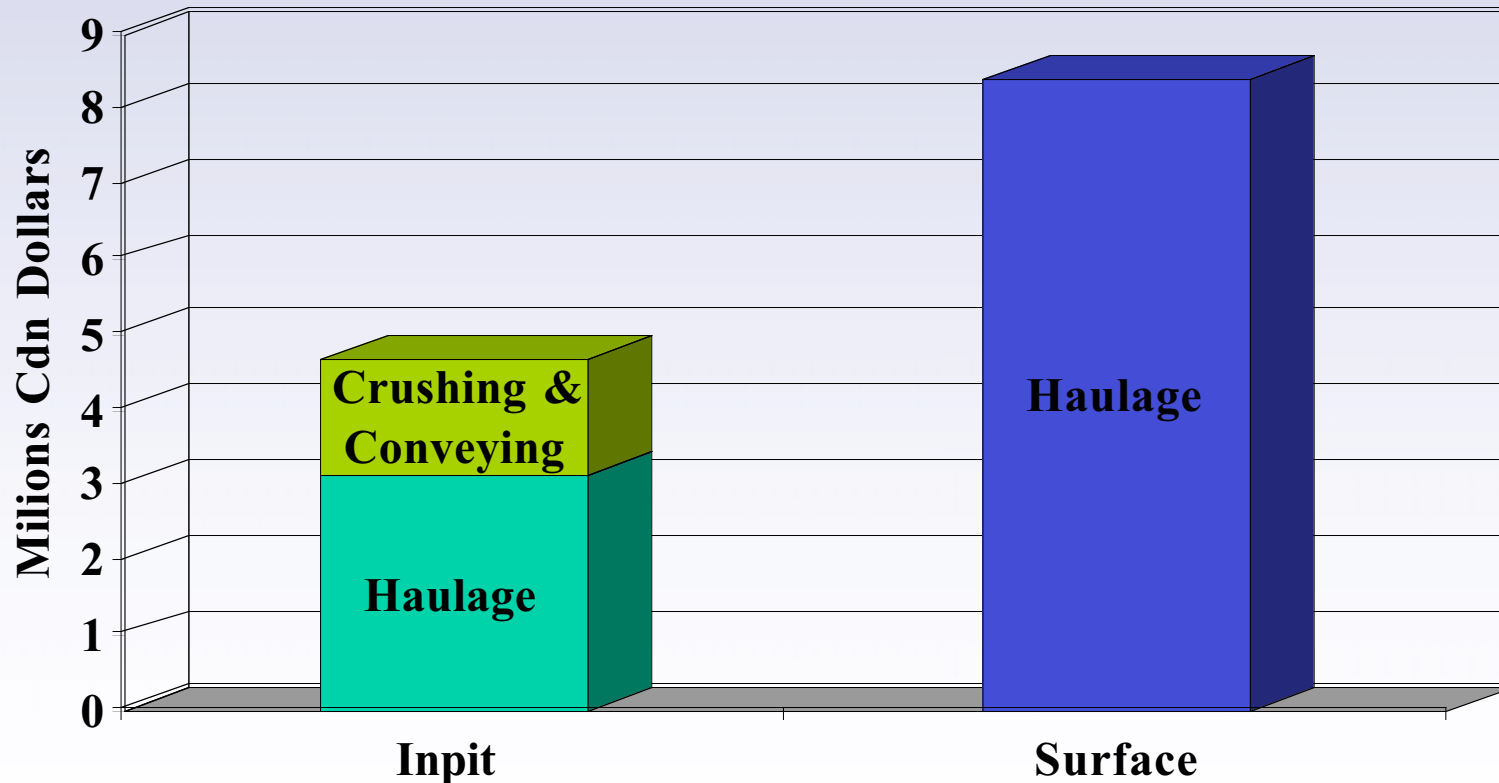
ALONG CONVEYOR ALIGNMENT

# Cost Savings

- Haul and Dump
  - Road Maintenance
  - Blasting
- Shorter Cycle Times  
Shorter Haul Distances  
Wider Patterns

# Annual Haulage Cost to Surface Crusher

27,200 t/d



# Dismantling Port Hardy

June 1998







# Loading Barge Port Hardy

August 1998



7.26 '98





**Mining Conveyor Alignment  
Constructing Drive Station and  
Installing  
Conveyors**

**1998-2000**









# Assembling Inpit Crusher Endako Pit

1998-2000



# Moving Crusher to Final Location and Commissioning

July-October 2000



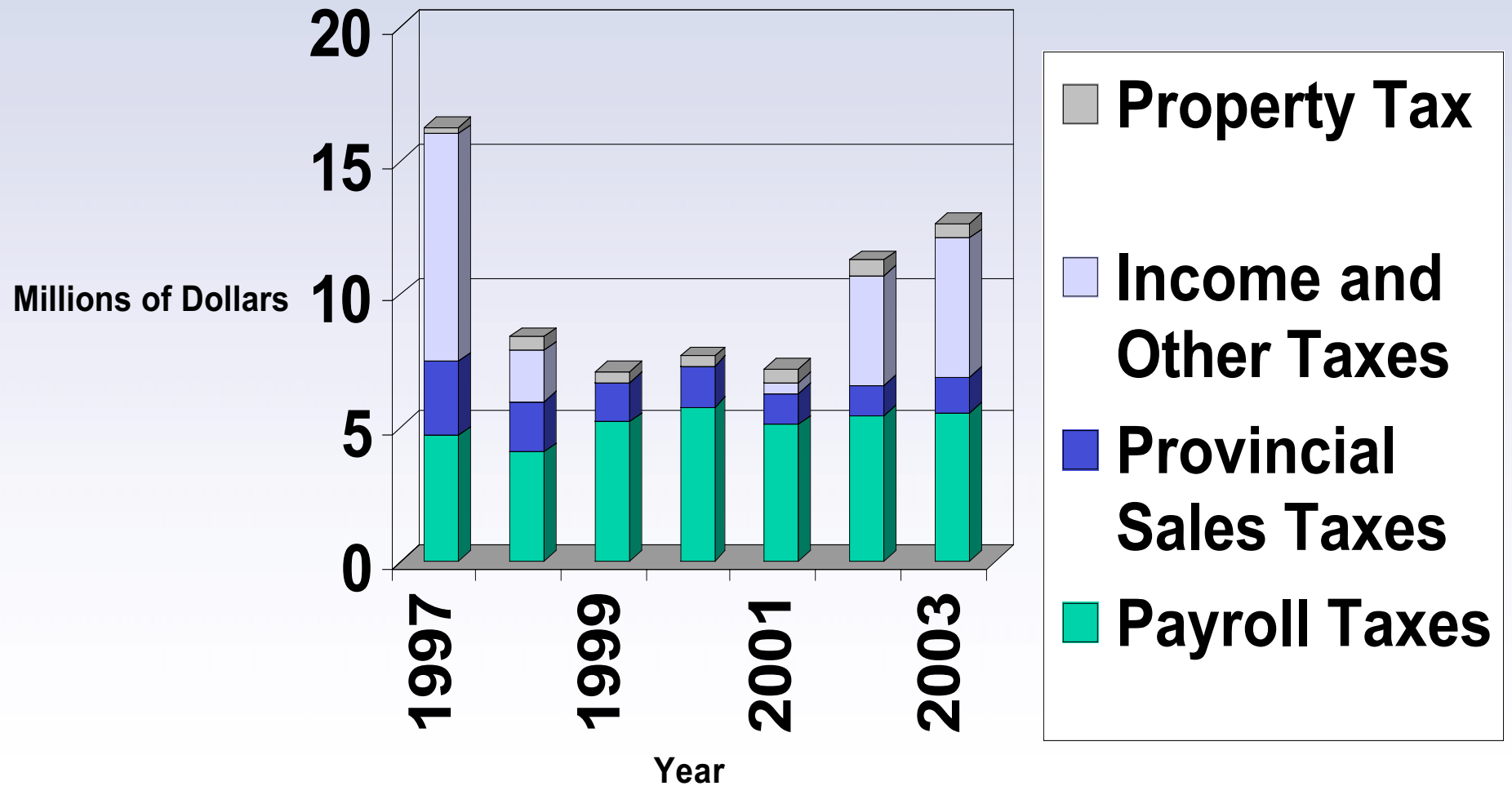




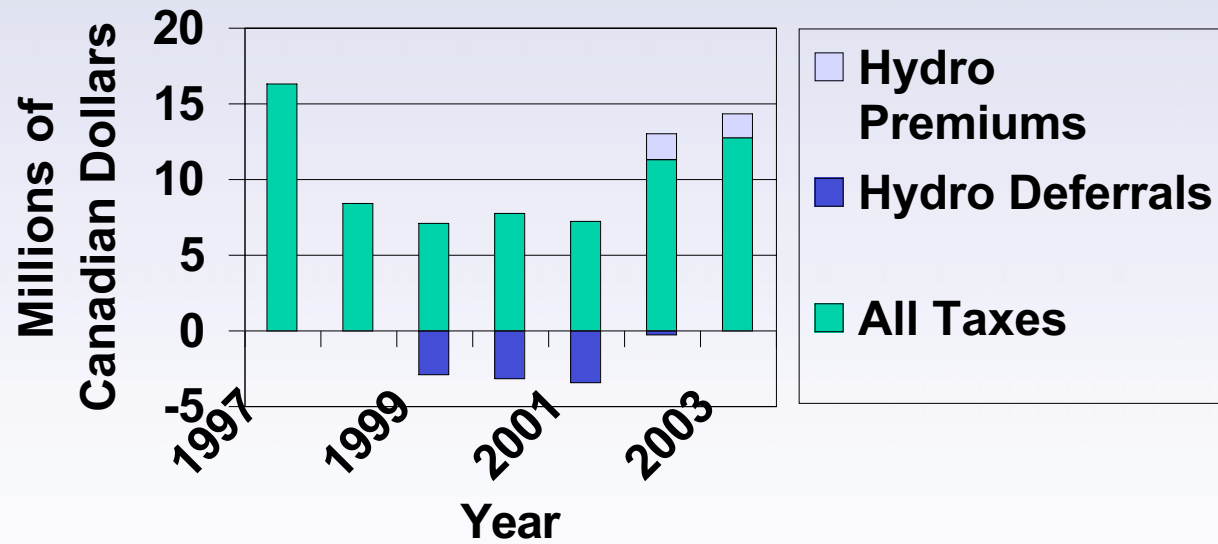




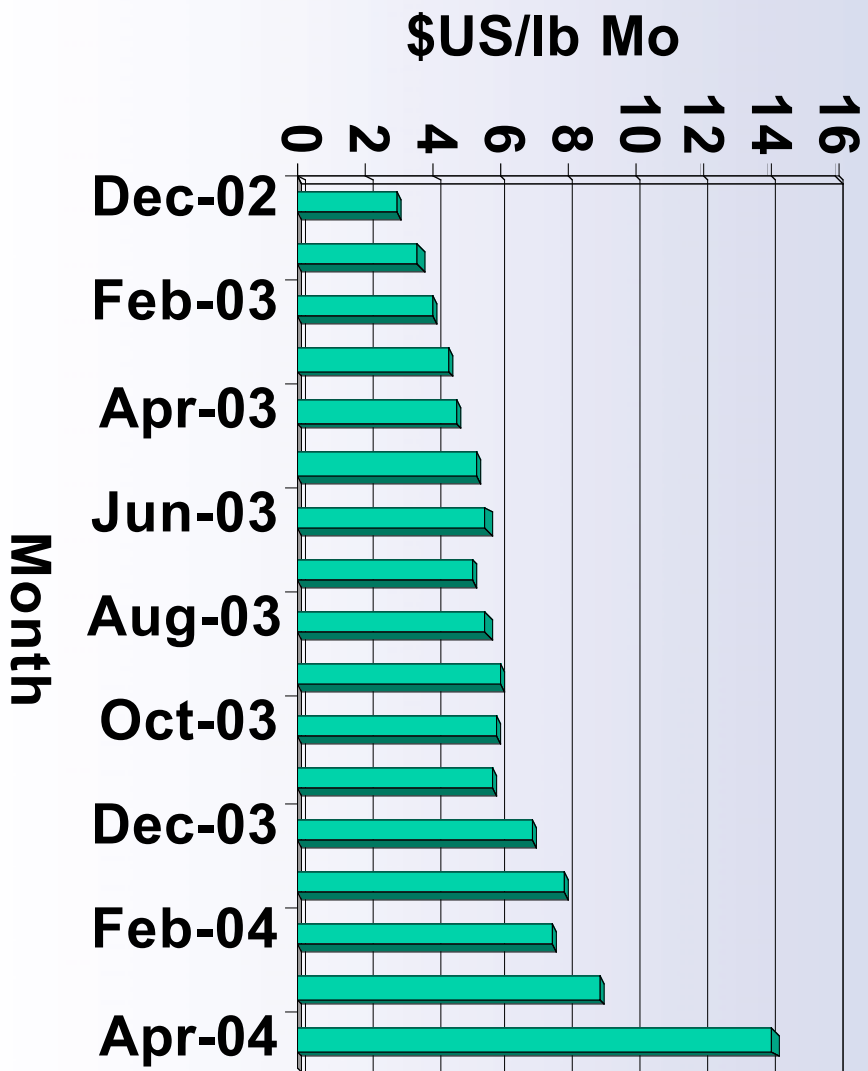
# Municipal, Provincial and Federal Taxes Generated Annually by Endako



## Taxes and Hydro Deferrals/Premiums



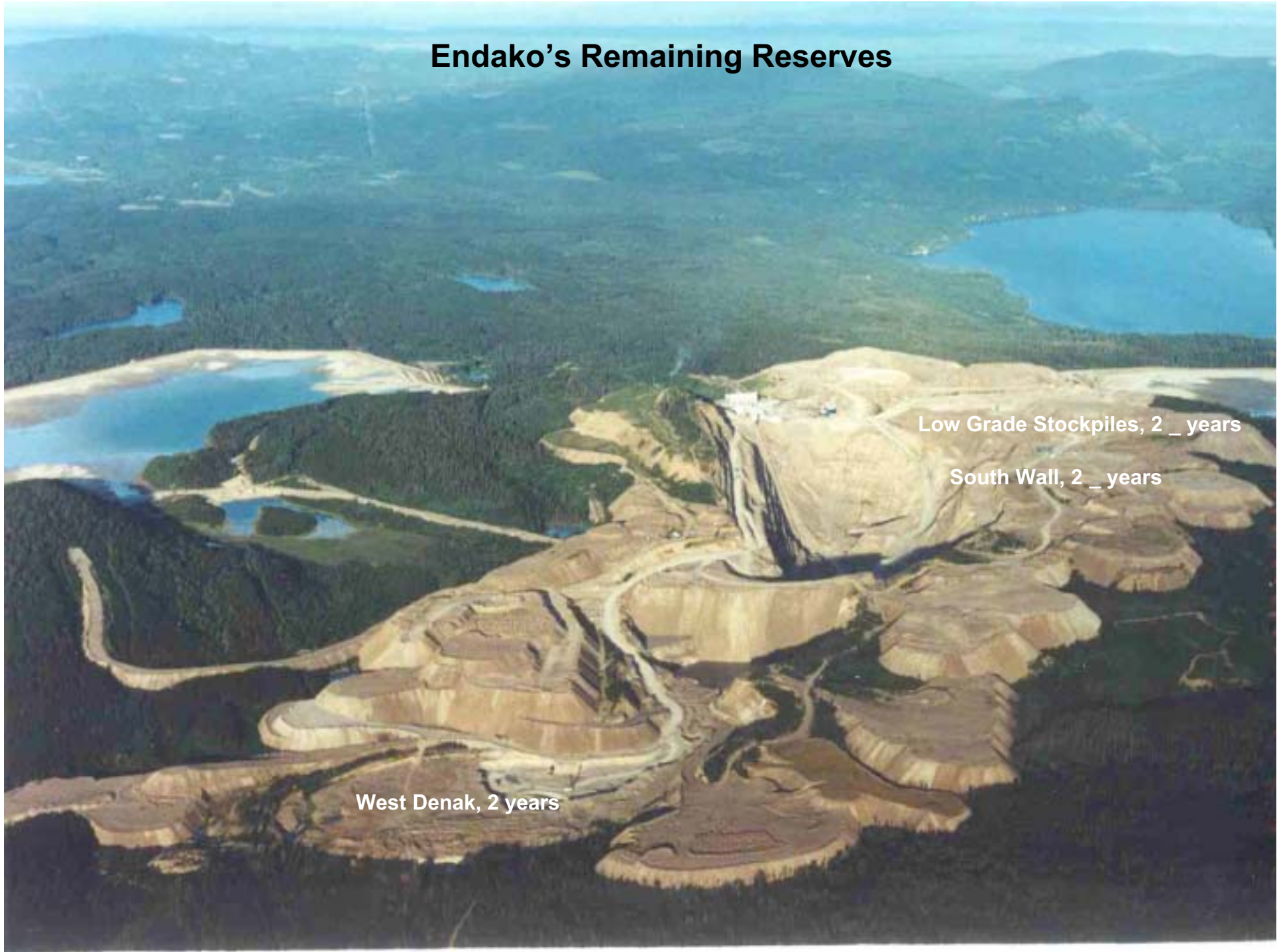
# Present Oxide Price Trend



# Cost Saving Measures for Surviving the Lean Years

- Mined Surface Stockpiles
- Mined Reserves Near Surface Crusher
- Reduced Manpower
- Reduced Waste Mining
- Delayed Capital Expenditures
- Parked Mine Equipment
- Installed Inpit Crushing System
- Job Protection Agreement

## Endako's Remaining Reserves



Low Grade Stockpiles, 2 \_ years

South Wall, 2 \_ years

West Denak, 2 years





# Endako Mines

A Joint Venture of  
Thompson Creek Mining Ltd and  
Sojitz Noble Alloys Corp. (Formerly Nissho Iwai)